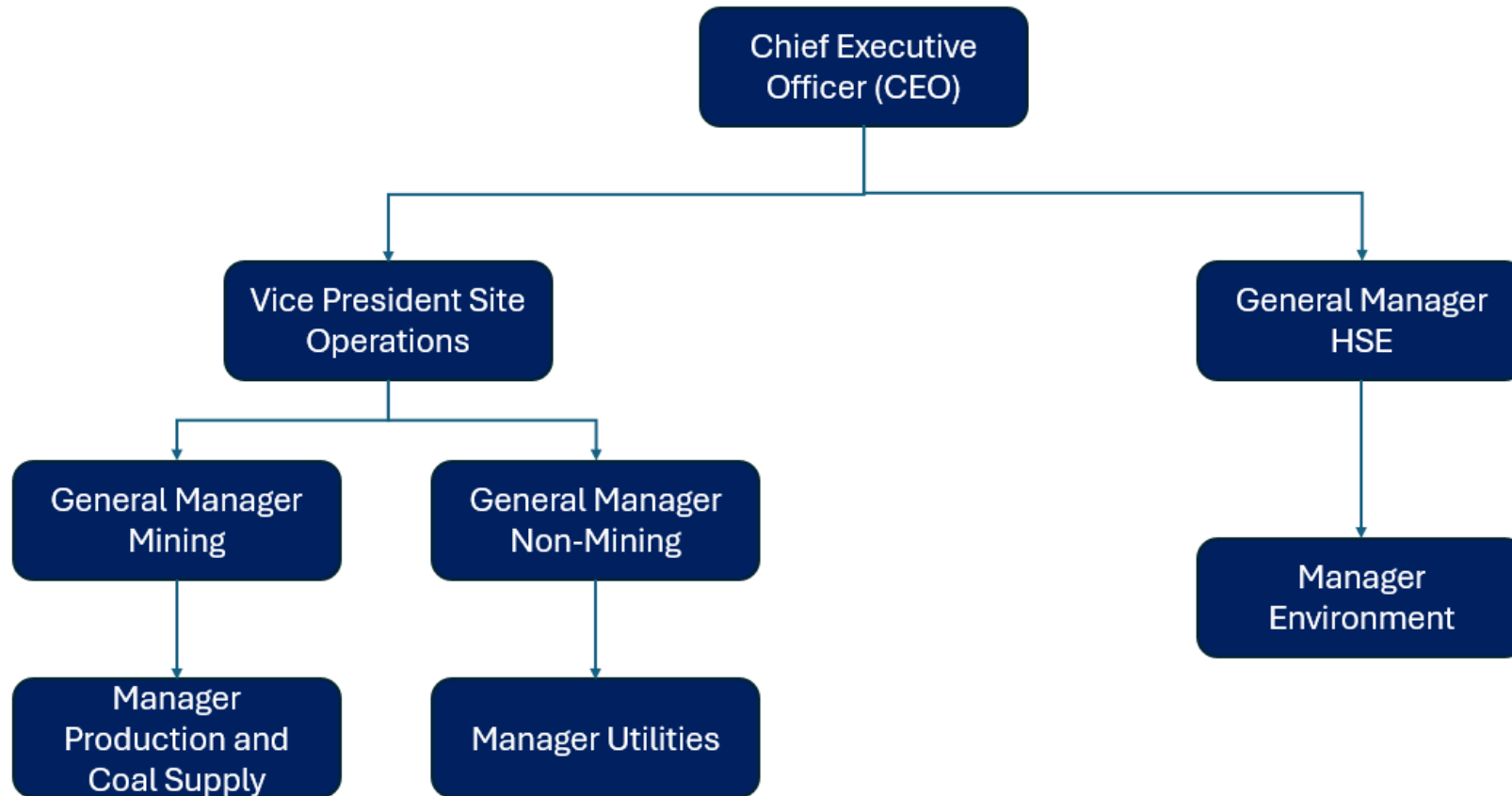


Water related Internal Governance



Water related Internal Governance



Position	Responsibility	Accountability
Chief Executive Officer (CEO)	<p>Ensure the company’s strategic alignment with sustainable water management and compliance with relevant laws.</p> <p>Approve company-wide water governance strategies and major water-related investment decisions.</p>	<p>Ensure that the entire organization has the necessary resources and strategies in place for compliance with water-related laws.</p>
Vice President, Site Operations (VP)	<p>Oversee site operations, ensuring the integration of sustainable water practices across all departments.</p> <p>Supervise the implementation of water-related initiatives across the site.</p>	<p>Ensure that the RO Plant and Sewage Treatment Plant operate in compliance with all local water quality standards and that peripheral dewatering activities meet the required regulatory standards.</p>
General Manager Health, Safety, and Environment (HSE)	<p>Ensure environmental regulations related to water quality, consumption, and discharge are followed across the site.</p> <p>Act as the primary liaison with SEPA (Sindh Environmental Protection Agency) for water-related compliance.</p>	<p>Ensure timely communication and regulatory compliance with SEPA on all water-related matters, including water discharge and quality monitoring.</p>
General Manager, Mining Division	<p>Oversee surface dewatering operations and manage water resources related to mining activities.</p> <p>Coordinate with other departments to ensure water management aligns with overall site strategy.</p>	<p>Ensure that surface dewatering is conducted in a compliant manner and no industrial activity is being performed on surface water before disposal</p>

Water related Internal Governance



<p>General Manager, Non-Mining Division</p>	<p>Manage the Utilities section, including the RO Plant, Sewage Treatment Plant, and peripheral dewatering.</p> <p>Ensure that the non-mining division operates efficiently with respect to water usage and treatment.</p>	<p>Ensure to maintain compliance with water-related permits and standards in non-mining operations.</p> <p>Responsible for ensuring that water treatment plants meet operational efficiency and environmental standards.</p>
<p>Manager Coal Production and Supply</p>	<p>Manage water used in coal production processes, ensuring minimal wastage and compliance with discharge standards.</p> <p>Collaborate with the Utilities Manager to meet regulatory water use standards.</p>	<p>Ensure water usage in coal production processes complies with internal standards and regulatory guidelines specific to the production operations.</p>
<p>Manager Utilities</p>	<p>Oversee the daily operation of the RO Plant, Sewage Treatment Plant, and peripheral dewatering systems, ensuring efficient water management and treatment.</p> <p>Implement water conservation practices and optimize water resource usage.</p>	<p>Ensure operational efficiency and compliance of the RO and Sewage Treatment Plants, ensuring that daily operations adhere to water treatment standards and reporting requirements.</p>
<p>Manager Environment</p>	<p>Monitor environmental data related to water, including usage, discharge, and treatment processes.</p> <p>Prepare and submit compliance reports to SEPA, ensuring all legal requirements are met.</p>	<p>Ensure timely submission of water-related environmental monitoring reports, including compliance data, to SEPA.</p>